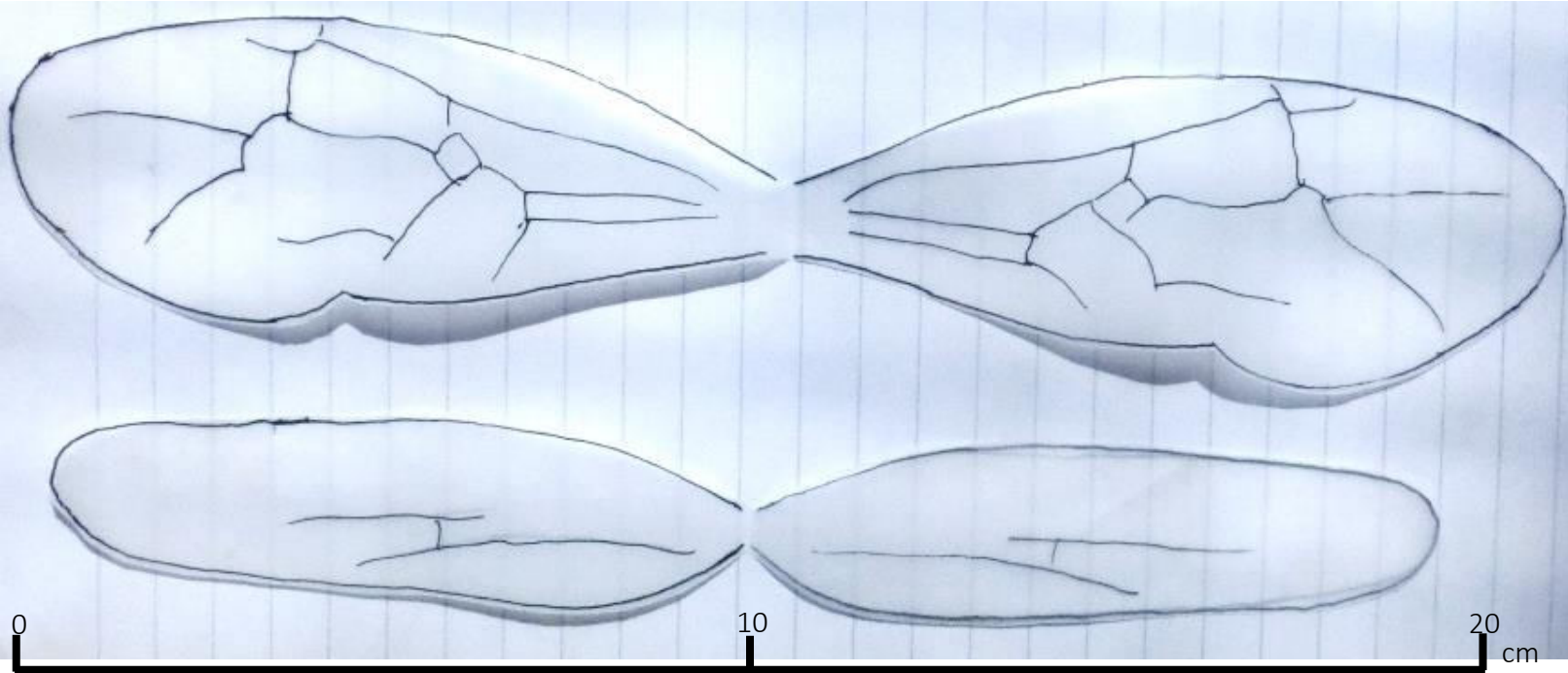


## Narrow-headed Ant model – wings supplement

### Magnificent Flying Machines

Once a year between July – August, winged queens and males emerge from nests to mate and disperse, hopefully to start new ant colonies. Give your ant models some wings!



- 1 Copy the wing shapes on to tracing paper (this page is scaled to print at A4 size; otherwise the scale bar can be used for reference)
- 2 Cut out the wings and fold them in two
- 3 The wings then slot between the folded over body section, as in the pictures below

Please share pics of your winged ants with us  
[www.facebook.com/buglife](https://www.facebook.com/buglife)

